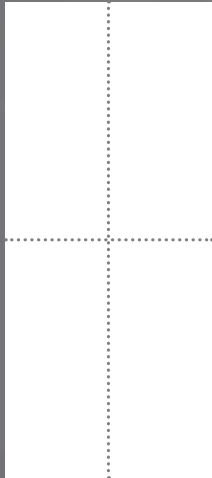




XXL



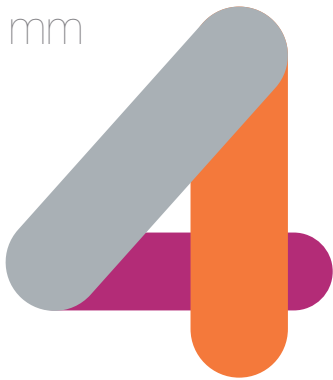
Greater height
to cubicles
for increased
privacy.

4300x1850 mm



COMPACT. DOUBLE SIDED.
ELEGANT BLACK CORE.
THE BIGGEST SIZE FOR THE GREATEST SAVING.
THAT'S ARPA XXL.

mm



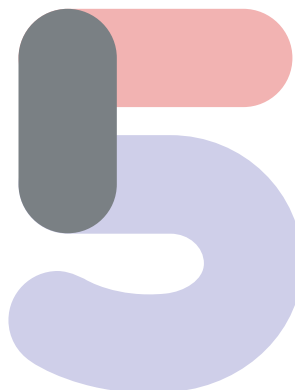
Double sided decorative, elegant and versatile, XXL by Arpa is an Extra Large Size HPL compact in a wide range of decors and thicknesses. Its large dimensions, physical and aesthetic properties and intrinsic Arpa quality make it ideal in a wide range of applications, from sanitary to work surfaces.

Its resistance to moisture and mechanical stresses make it particularly suitable in areas with high humidity and intensive use such as swimming pools, gyms, spas, hospitals, airports, hotels and cinemas. The hygienic properties of HPL and the smooth surface make it very easy to clean and sanitize.

Arpa XXL's thickness range fits the needs of the sanitary /cubicle industry in all market regions both in terms of design and machining. The different thicknesses, such as 10 mm, 12 mm and 12.7 mm, are adaptable to specific standards. The extra size has been designed to optimize the yield.

XXL by Arpa has great dimensional stability, excellent machining properties and is easy to install. Thanks to its elegant black core, panel edges are naturally finished. A selected range of "made in Italy" decors, rich in fresh and modern plain colors, trendy materic expressions and innovative wood grains makes XXL unique.

mm



ARPA XXL

Cubicles and lockers
Partitions
Wall Lining
Self-supporting working surfaces

Swimming pools
Sports centers and Gyms
Spas
Hotels and Restaurants

Hospitals
Medical centers
Schools and Universities
Airports
Railway stations

XXL by ARPA is a compact High Pressure Laminate (CGS) with both faces decorated.

≈70% Paper
≈30% Thermosetting Resins

-  Excellent moisture resistance
-  Great impact resistance
-  Scratch and wear-resistant
-  Self-supporting
-  Light fastness
-  Ease of maintenance and cleaning
-  Hygiene

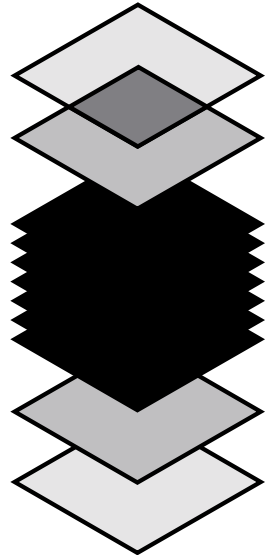
Overlay (Only for printed decors)

Decorative Paper

Black Core

Decorative Paper

Overlay (Only for printed decors)



Arpa XXL most important characteristics according to EN 438 classification.



Tech

Pre and post-sale consulting and technical support. This service is tailored according to application field and customer requirements.

Trends

A specialized team keeps track of global innovations and developments in design, to ensure that your products are always in line with the latest trends in interior design.

Hub

This experimental platform showcases events designed at meeting face-to-face with our partners to share ideas and experiences.

Quick Sample

A quick delivery service of samples in the desired XXL references.

Over 50 years of research and technology

Since 1954 Arpa Industriale has been designing and manufacturing panels with very high quality HPL technology for the most diverse applications: from architecture to interior design, from healthcare to shipyards, from transport to hospitality, from retail to kitchens. Arpa Industriale offers a vast range of choices of products, extremely varied in both structure and appearance.

Arpa HPL are produced at the 150,000 sqm plant (over 1.6 million square feet) in Bra, Piedmont, with all the originality of expressive design and creativity that the label "made in Italy" stands for.

For information about our sales network, to download technical information and access Arpa's services, visit our website arpaindustriale.com

COLORSINTESI



0001



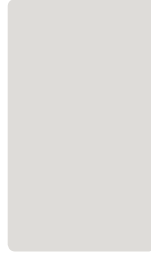
0204



0218



0201



0527



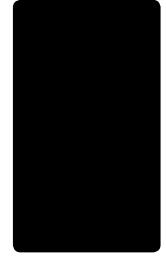
0211



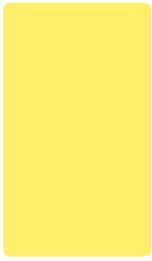
0234



0623



0509



0573



0647



0564



0682



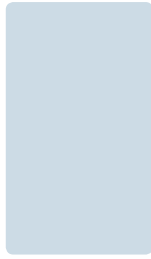
0535



0561



0571



0273



0641



0607



0569



0711



0619



0606



0605



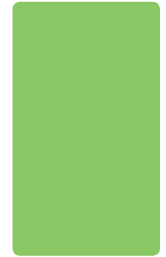
0594



0644



0589



0660

Standard delivery program

Presentation
Core
Finishes

Double sided
Black
Erre/OSL

Thicknesses (mm/in*)

4,0	1/64
6,0	1/4
8,0	5/16
10,0	3/8
12,0	1/21
12,7	1/2
14,0	1/18

Panel size (mm/in*)

4300x1850 ≈169x73

* Please note that due to conversion from metric, the imperial values provided are approximate.

WOODS



4519



4516



4511



4520



4456



4325



1852



4327



4390



4521

MATERIC EXPRESSION



3194



3193



3191



3192



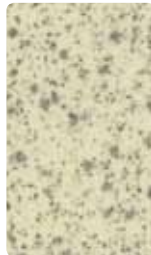
3283



1017



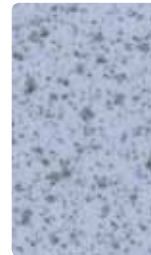
0998



9130



9131



9132



9133

Erre (R)

A functional, tactile, smooth texture that gently reflects light, enhancing colors and highlighting the harmony of compositions.

OSL

Smooth and velvety. This texture is perfectly uniform and slightly satiny.

On request, XXL is also available in CGF grade (Flame Retardant) with brown core.

Many decors of the XXL range are also available in standard and postforming grade thin HPL (HGS, HGP). Please contact Arpa Customer Service for detailed information.

Code	Name	LRV	RAL Cl.	Pantone	NCS
0001	Bianco	82	9016	10A01 (BS)	S 0500-N
0201	Sabbia	57	1013	400C	S 1005-Y
0204	Magnolia	75	–	–	S 0505-Y20R
0211	Grigio Perla	43	7038	428U	S 2502-B
0218	Beige	62	1015	468U	S 1010-Y30R
0234	Grafite	25	7004	430U	S 4502-B
0273	Azzuro Ice	65	7047	–	S 1010-R80B
0509	Nero	0,37	9004	Black C	S 9000-N
0527	Grigio Argento	52	7047	427U	S 1500-N
0535	Rosa Baby	56	–	488C	S 0520-R
0561	Rosso Devil	10	3020	186C	S 1080-Y90R
0564	Giallo Mais	40	1003	123C	S 1070-Y20R
0569	Blu Valencia	29	–	2995C	S 1060-B
0571	Rosso Oriente	4	3003	195C	S 2570-R
0573	Giallo Primula	71	–	100C	S 0540-Y
0589	Verde Irlanda	29	–	346C	S 3030-G10Y
0594	Fucsia	9	4006	247U	S 2060-R30B
0605	Glicine	31	–	529U	S 2040-R50B
0606	Lilla	51	–	263C	S 0525-R60B
0607	Lavanda	29	–	543U	S 2030-R90B
0619	Blu Artico	13	–	2718C	S 2060-R70B
0623	Grigio Ferro	8	–	432U	S 7500-N
0641	Crocus	45	–	277U	S 1020-R80B
0644	Turchese Pastello	36	6034	5493U	S 2020-B50G
0647	Giallo Bisanzio	51	1018	129C	S 0580-Y
0660	Verde Acido	43	–	375C	S 0570-G30Y
0682	Arancio	38	–	1375C	S 0570-Y50R
0711	Blu Baia	12	5015	–	S 3050-R90B
0998	Selenio Grigio	–	–	–	–
1017	Selenio Silver	–	–	–	–
1852	Faggio Giapponese	–	–	–	–
3191	Copperfield Avana	–	–	–	–
3192	Copperfield Grigio	–	–	–	–
3193	Copperfield Chiaro	–	–	–	–
3194	Colormat Bianco	–	–	–	–
3283	Abstract Aluminium	–	–	–	–
4325	Noce Coloniale	–	–	–	–
4327	Acero Italiano	–	–	–	–
4390	Zebrano Natural	–	–	–	–
4456	Rovere Zadar	–	–	–	–
4511	Rovere Fumo	–	–	–	–
4516	Rovere Asburgo Scuro	–	–	–	–
4519	Rovere Asburgo	–	–	–	–
4520	Rovere Asburgo Naturale	–	–	–	–
4521	Frassino Americano	–	–	–	–
9130	Spot Beige	–	–	–	–
9131	Spot Lavanda	–	–	–	–
9132	Spot Crocus	–	–	–	–
9133	Spot Turchese Pastello	–	–	–	–

The Light Reflectance Value or LRV is a measurement that gives the percentage of light reflected from the surface, commonly used in interior design and decorations. The LRV shown in this table have been measured in the Arpa Industriale Laboratory, in accordance with EN 13721/04.

RAL, NCS & Pantone references are the nearest equivalents and should be verified visually.

Disclaimer

The disclaimer that follows is a summary of the applicable full disclaimer (which can be found on arpaindustriale.com). The information provided by Arpa Industriale S.p.A. ("Arpa") in this document is solely indicative. Arpa is unable to warrant the accuracy and completeness of this information. No rights can be derived from the information provided; the use of the information is at the other party's risk and responsibility. This document does not guarantee any properties of Arpa's products. Arpa does not warrant that the information in this document is suitable for the purpose for which it is consulted by the other party. The document does not contain any design, structural calculation, estimate or other warranty or representation that customers and third parties may rely on. Colours used in Arpa's communications (including but not limited to printed matter) and in samples of Arpa's products may differ from the colours of the Arpa's products to be supplied. Arpa's products and samples are produced with the specified colour tolerances and the colours (of production batches) may differ, even if the same colour is used. The viewing angle also influences the colour perception. Customers

and third parties must have a professional adviser inform them about (the suitability of) the Arpa's products for all desired applications and about applicable laws and regulations. Arpa reserves the right to change (the specifications for) its products without prior notice. To the maximum extent permitted under the applicable law, Arpa is not liable (neither contractual nor non-contractual) for any damage arising from or related to the use of this document, except if and to the extent that such damage is the result of wilful misconduct or gross negligence on the part of Arpa and/or its management. All oral and written statements, offers, quotations, sales, supplies, deliveries and/or agreements and all related activities of Arpa are governed by the General Terms and Conditions of Arpa Industriale S.p.A. All oral and written statements, offers, quotations, sales, supplies, deliveries and/or agreements and all related work of Arpa USA, Inc. ("Arpa USA") are governed by the Arpa USA General Terms and Conditions of Sale. All intellectual property rights and other rights regarding the content of this document (including logos, text and photographs) are owned by Arpa and/or its licensors.

Arpa Industriale S.p.A.

Via Piumati, 91
12042 Bra (CN) – Italy
Tel. +39 0172 436111
Fax +39 0172 431151
E-mail: arpa@arpaindustriale.com
export@arpaindustriale.com

Arpa Industriale Iberica S.L.U.

Calle Ribera, 5
08003 Barcelona – Spain
Tel. +34 932 687 061
Fax +34 931 163 300
E-mail: arpaiberica@arpaindustriale.com

Arpa France S.A.R.L.

50, Impasse de la Balme
69805 SAINT PRIEST - CEDEX - France
Tel. +33 (0)4 78 90 00 23
Fax +33 (0)4 78 90 64 66
E-mail: arpafrance@arpaindustriale.com

Arpa Germany

E-mail: arpadeutschland@arpaindustriale.com

Arpa Nederland B.V.

Nieuw Mathenesserstraat 69
3113 AE SCHIEDAM - The Netherlands
Tel. +31 (0)10 2857315
Fax +31 (0)10 2857331
E-mail: arpanl@arpaindustriale.com

Arpa UK Ltd

Block 3, Park Hall Business Village,
Park Hall Road, Longton
Stoke-On-Trent ST3 5XA – Great Britain
Tel. +44 (0)1782 332368
Fax +44 (0)1782 331876
E-mail: arpauk@arpaindustriale.com

Arpa USA

62, Greene Street
NEW YORK, NY 10012 — USA
Tel. +1 212 334 6888
E-mail: arpausa@arpaindustriale.com